

BRIGHT IDEAS FROM THE NORTH

The **Nordic Light Series** – presented by
Herrmans Bike Components
– Produced in Finland.



Contents

Frontlights	3
Nordic Xtreme & Nordic PRO	4
Nordic MR10 Plus & Nordic MR10	5
Nordic MR9	6
Nordic MR5	7
Nordic CL3	7
Rearlights	9
Nordic Trace Plus	10
Nordic Trace	11
Nordic Trace Easy	11
Grip Altro	12
Chainguard Fuse	14
Spoke Protector	15



FRONTLIGHTS



Nordic Xtreme &
Nordic PRO



Nordic MR10 Plus



Nordic MR10



Nordic MR9



Nordic MR5



Nordic CL3

NORDIC XTREME & NORDIC PRO



Versatile high-end lights with optional high and low beam

Herrmans new frontlight heroes Nordic Xtreme and Pro, with switch for [high and low beam \(Xtreme\)](#), have brought a touch of the technology from the car industry into biking, by collaboration with Nordic Lights. Nordic Xtreme and Pro are the first [bicycle front lights suitable for all kinds of e-bikes 25km/h-45km/h](#). Their alloy housing gives an efficient cooling of the LEDs, and the robust [glass lenses](#) offer extremely good UV- and scratch resistance. Thanks to the smart bracket solution, they can be mounted both on the handlebar and the stem. The low beam offers 650 lumens and 120 lux (Xtreme and Pro), and the high beam offers 1100 lumens and 250 lux (Xtreme only).

Operational Lumens Output	LB 650 lm, HB 1100 lm	Optical System	Projector
Power Source	E-bike	Operating modes	Low beam / High beam (Xtreme)
Nominal Voltage DC	12 V	Mounting Options	Handlebar / stem
Power Consumption	LB 10 W, HB 16 W	Housing	Alloy
Input connector type	Cable	Salt Spray Test	ISO 9227 240 h
Number of LED's	2	Type approval (light)	ECE R113, class B & StVZO
Colour Temperature	5700 K	EMC	EN 15194

LB=Low Beam (Xtreme and Pro)
HB=High Beam (Xtreme)

NORDIC MR10 PLUS & NORDIC MR10



release
2023



MADE IN FINLAND

Herrmans has developed the next generation of front-light, **Nordic MR10 Plus**, in our high-end light series **Nordic**. The **Nordic MR10 Plus** is optimized for urban surroundings with its non-dazzling low beam, and high beam for off road biking, with sharp cutoff line and homogenous and wide light pattern. Its alloy housing provides efficient cooling of high-performance LEDs. The reflector and arm piece come pre-assembled, and, thanks to this model's new power-input slide, its installation is completely tool-free. It has an average value output of 80 Lux for its low beam and 120 Lux for its high beam. **The Nordic MR10 has the same design as the Nordic MR10 Plus, but without the high beam.**

Operational Lumens	LB prel 220 lm	Optical System	Mirror reflector
Output	HB prel 450 lm	Operating modes	Low beam / High beam (10 plus)
Power Source	E-bike	Mounting Options	Fork
Nominal Voltage DC	12 V	Housing	Alloy
Power Consumption	LB 4 W / HB 10 W	Salt Spray Test	ISO 9227 240 h
Input connector type	Cable+ Power input slide	Type approval (light)	StVZO (10 plus) StVZO & French (10)
Number of LED's	2 (10 plus) / 1 (10)	EMC	EN 15194 (MR10 plus)
Colour Temperature	5700 K		

LB=Low Beam (10 and 10 plus)
HB=High Beam (10 plus)



Based on the successful H-Black series, we have developed a new light family with an updated design and improved performance. The new optics developed for the MR 10 / MR 10 Plus deliver a fantastic low beam together with a powerful high beam. You really should experience it with your own eyes.

Tomas Porthin, Lead Engineer (Lights & Compliance)

FRONT
LIGHTS

NORDIC MR9



With its modern and sleek design, the Nordic MR9 e-bike front-light is the upgraded version of H-Black MR8, our popular best-selling front-light from the H-Black series. **With its light output of 60 Lux, it makes your ride safe and secure, and its alloy housing makes an efficient cooling system for this powerful LED light.** Thanks to its new power-input slide, it can still be installed tool-free. It fits for e-bikes moving at a speed up to 25 km/h. Its mounting is 10 mm wide, and can be fastened with M6 screws.

Operational Lumens	prel ca 200 lm	Optical System	Mirror reflector
Power Source	E-bike	Operating modes	Low beam
Nominal Voltage DC	6-12 V	Mounting Options	Fork
Power Consumption	prel ca 3,5 W	Housing	Alloy
Input connector type	Cable + Power input slide	Salt Spray Test	ISO 9227 240 h
Number of LED's	1	Type approval (light)	StVZO & French
Colour Temperature	5000 K	EMC	EN 15194

NORDIC MR5



MADE IN FINLAND

The Nordic MR5 e-bike front-light is, with its sophisticated and modern design, is the obvious choice when you spec your bike. With its light output of 40 Lux, it makes your ride safe and secure. Its plastic housing gives the Nordic MR5 a modern design, and a smooth production with streamlined quality. Thanks to its new power-input slide, its installation is tool-free. It is a good fit for e-bikes moving up to a speed of 25km/h. Its mounting is 10 mm wide and can be fastened with M6 screws.

Operational Lumens Output	prel ca 140 lm	Optical System	Mirror reflector
Power Source	E-bike	Operating modes	Low beam
Nominal Voltage DC	6-12 V	Mounting Options	Fork
Power Consumption	prel ca 2,2 W	Housing	Plastic
Input connector type	Cable + Power input slide		
Number of LED's	1	Salt Spray Test	ISO 9227 240 h
Colour Temperature	5000 K	Type approval (light)	StVZO & French
		EMC	EN 15194

NORDIC CL3

The Nordic CL3 is the entry-level e-bike front-light from the Nordic e-front-light series. It is the most affordable light in the new light range without leaving out the high-quality thinking that you expect from Herrmans. It is set for release in 2023.

release
2023



FRONT
LIGHTS



High-End bicycle
components.
Designed and
produced on the
Finnish West Coast

REARLIGHTS



Nordic Trace Plus



Nordic Trace



Nordic Trace Easy

MADE IN FINLAND

REAR
LIGHTS

NORDIC TRACE PLUS



Herrmans new premium e-bike rear-light **Nordic Trace Plus** is a high-quality and sleek light package that gives your bike an upgraded look. It follows the same design language as the Herrmans front-light series Nordic, to make a perfect match. The **Nordic Trace Plus with integrated software and sensor gives you Herrmans' first rear-light with a brake light function and with its completely new optics, it gives you a modern homogenous light.** Thanks to its new power-input slide, it can be installed tool-free.

Power Source	E-bike	Operating modes	Rear light / brake light
Nominal Voltage DC	6-12 V	Mounting Options	Carrier
Input connector type	Cable + Power input slide	Mounting Distance (rearlight)	50 & 80mm
Number of LED's	54	Housing	Plastic
Colour Temperature	N/A	Salt Spray Test	ISO 9227 240 h
Optical System	Lens	Type approval (light)	StVZO
		EMC	EN 15194

The elegant and modern Nordic Trace Plus stands from the competition with its superb touch, feel and appearance. Bring the safety of your biking to a new level with the intelligent brake light function."

Tuomas Verronen, Project Lead



NORDIC TRACE

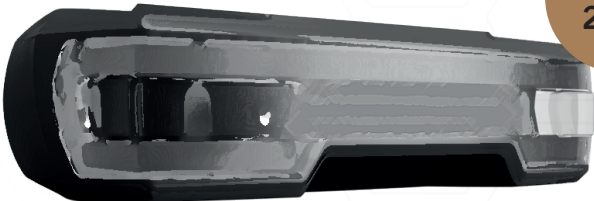


release
2023

The [Nordic Trace](#) has the same design as the Nordic Trace Sensor, but without the brake light sensor.

Power Source	E-bike	Operating modes	Rear light
Nominal Voltage DC	6-12 V	Mounting Options	Carrier
Input connector type	Cable + Power input slide	Mounting Distance (rearlight)	50 & 80mm
Number of LED's		Housing	Plastic
Optical System	Lens	Salt Spray Test	ISO 9227 240 h
		Type approval (light)	StVZO & French
		EMC	EN 15194

NORDIC TRACE EASY



release
2023

The entry-level e-bike rear-light from the Nordic series is called the [Nordic Trace Easy](#). It represents the most affordable light in the new rear-light range without leaving out the high-quality attention to design that you expect from Herrmans. **It is set to be released in 2023.**

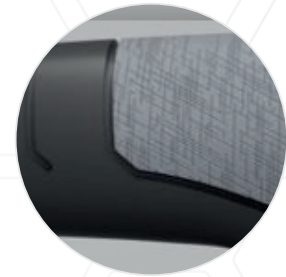
MADE IN FINLAND

REAR
LIGHTS

GRIP ALTRO



Brown Grey Black



Grip Altro - a premium grip with great ergonomics

Herrmans Grip Altro is one of our [finest premium bicycle grips](#) with a new and modern surface pattern. Easy to mount and fastened securely with our practical lock system. With high comfort and fast angle adjustment, the grip also has a great dampening ability due to its ergonomic shape. As you may expect from us, it is made from European-made non-toxic materials, and is phthalate-, PAH-, latex- and natural rubber free, not to mention ISO/EN standard 4210-5 compliant.

Length	123 and 100mm	Weight	76g, 70g
Diameter	22mm	Density	Dual
Lock mechanism	Clamp	Material	TPE*)

* Free from: phthalate, PAH, Natural rubber, Latex

"We wanted to create a more formal version of our Grip Primo. Instead of using a fabric, we opted for a textured surface with a simplistic, yet modern design"

Thomas Finnäs, Lead Engineer



MADE IN FINLAND

Ask us about
our After-Market
and Private label
products!

CHAINGUARD FUSE



Fuse Chainguard - a novel concept for the future

Herrmans new chainguard has a lightweight feel, available as matte with distinct glossy surface areas. The new customizable chainguard is made of **durable, flexible and UV-resistant material**. Fast snap on front fitting assembly with no visible screws for normal bikes and e-bike systems such as Bosch, Shimano, Yamaha and Bafang.

Length	325 - 440mm
Diameter	125mm
Chainwheel Teeth	38Teeth
Color	Black

The chainguard consists of two separate parts, the chain ring and the chain cover tail. These two parts combined and fused together form a single entity called The Chainguard Fuse. As separate parts, the modularity and customizability awaken!

Ronnie Mattsson, Project Lead



MADE IN FINLAND



SPOKE PROTECTOR



Herrmans' new spoke protector offers you a product made from a recycled raw material that reduces greenhouse gas emissions by around 90%.

Sari Noromies, Operational Excellence & Sustainability Developer

GUARDS



MADE IN FINLAND

Head office Finland

Herrmans Bike Components Ltd

Bennäsvägen/Pännäistentie 143
P.O. Box 36
FIN-68601 Jakobstad/Pietarsaari
FINLAND
herrmans.bikeorders@herrmans.eu
Telephone +358 20 1345 100

Office Germany

Herrmans Nordic Lights GmbH

Wilhelmstr. 5
59439 Holzwickede
Germany
herrmans.bikeorders@herrmans.eu
Telephone +49 2301 919 787 10

Office Taiwan

Herrmans Nordic Lights

27F.-A1, No. 236, Shizheng N.
2nd Rd.,
Xitun Dist., Taichung City 407607,
Taiwan (R.O.C.)
herrmans.bikeorders@herrmans.eu
Telephone +886 4 3707 7189

