



WHERE SUCCESS IS BORN

Herrmans Bike Components is a success story from Finland's friendly and entrepreneurially-spirited West Coast. Starting with the production of our very first bike component in 1959, we believed in the creative power of innovation. Our founder, Bernhard Herrmans, realized the potential of the very first product, the rim tape, and had the foresight to automatize production early on. This entrepreneurial mindset remains strong in the company to this day. Herrmans Bike Components has now been thriving for 60 years and possesses a wide variety of cutting-edge products in its premium product portfolio.

HIGH-TECH EXPERTISE

Today we are proud to be a modern and innovative high-tech power house that offers world class solutions for the bike industry. We believe that our success is derived not only from one factor but the sum of many things we have done right over the years.

However, if we had to choose, our R&D department and the creative work culture we have been fostering for decades are the main contributors to our success.

Innovation has always been the DNA of Herrmans Bike Components Ltd. Through development and a curious mindset, we have gained extensive know-how in plastic technology, optics and light patterns. We have our own in-house lab for engineers, featuring a vibration testing lab, light lab, electronics lab, salt spray lab and CT scanner where we develop and test our latest products.

BROAD PRODUCT RANGE

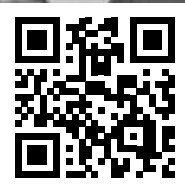
We design and manufacture lights, grips, chain guards, reflectors and rim tapes of premium quality and take pride in co-creating many of our products with our customers. In this catalogue you will find our latest product innovations. If you are looking for a specific product category or item, or just want to look up a detail, you will find that piece of interesting information on our web site

www.herrmans.eu



BRIGHT IDEAS FROM THE NORTH

Visit our website!



FIND WHAT YOU NEED CONTENT

Not all of the following products are available in all markets. During constant improvement specifications and design are changing. All values are nominal values. Illustrations do not necessarily show the design of every version. Some features are version specific. For packaging information please visit www.herrmans.eu



6 LIGHTS



13 GRIPS



17 CHAIN GUARDS



22 REFLECTORS



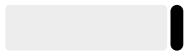
24 RIM TAPES

CHOOSE YOUR FAVORITE COLOR OPTIONS

Our grips and chainguards can be made in any colour, on request. We hold stock of frequently requested colours, as listed below. We can also colour match any Pantone (PMS). Please ask our team for further information.



GRIPS
multiple or single colour



ALLOY LOCKRINGS
on grips



CHAIN GUARDS
multiple or single colour



TAIL PIECES
on chain guards

	black / process black
	white / traffic white
	grey / cool grey 11
	yellow / PMS-108C
	orange / PMS-1665
	red / PMS-200
	purple / PMS-253
	lime / PMS-375
	green / PMS-363
	blue / PMS-295
	brown / PMS-469

	black / process black
	white / traffic white
	grey / cool grey 11
	red / PMS-194
	green / PMS-355
	blue / PMS-301
	matt-silver
	gold
	titanium-grey
	SR red suave
	SR brown / PMS-7518

	black
	white
	transparent
	silver
	lightsmoke
	darksmoke

	black
	white
	transparent
	darksmoke

Please ask our team for Selle Royal colourmatched brown colours on chain guards and tail pieces.

FRONTLIGHTS

That the cyclist is seen while riding is very important. But the cyclist must also see the terrain ahead properly, so we have focused our expertise on optimizing the light- output and pattern. For improved safety, our frontlights are also equipped with side windows to increase visibility. The materials we use are durable so that the end users get a frontlight that performs well in all kinds of weather. When you turn to us, you get a reliable partner that takes even the strictest market regulations into consideration.

OUR NEW FRONTLIGHT STAR FAMILY

NORDIC

WITH TWO STREAMLINED VERSIONS; NORDIC XTREME AND NORDIC PRO

Offering a well-rounded solution to your cyclists doesn't require compromising quality or speed of production. Offer your customers the latest in innovative technology and the most versatile frontlight construction, while maintaining short production times. Because with our new frontlight heroes Nordic XTREME and Nordic PRO – you have a “one light fits all” e-bike solution.

- COMPATIBILITY**
The Nordic frontlight family suits e-bikes of all speeds, 25km/h–45km/h
- LIGHTING OPTICS**
Both Nordic PRO and Nordic XTREME offers sharp cut-off lines to eliminate dazzling of oncoming traffic. Nordic XTREME offers both high and low beam technology.
- POWERFUL CONSTRUCTION**
Nordic is built with Herrmans' **high quality parts: Alloy Housing** for durability and efficient cooling, **Robust Glass Lens** for superior UV and scratch resistance, **Unique lighting optics** for a brilliant light pattern.
- VERSATILITY**
Both the Nordic PRO and Nordic XTREME offer versatile mounting options, including fork and handlebar/stem installment with fastening bracket for top or fork mounting.



NORDIC XTREME AND PRO

Versions	Nordic XTREME e-bike: on, 12 V Nordic PRO e-bike on: 6–12 V
Approvals light	Germany (StVZO), ECE R113
Light output	1100 lumen
Features	Suitable for both standard e-bikes up to 25km/h and fast e-bikes up to 45km/h, dazzle free with sharp cut off line, superior light distribution and homogeneity.

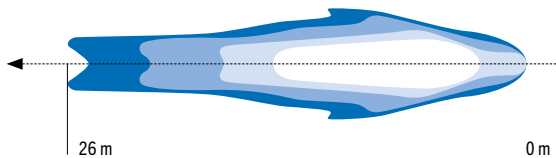
H-BLACK FAMILY



H-BLACK PRO

Versions	H-Black Pro dynamo: on/off standlight H-Black Pro e-bike: on, 6–12 V DC
Approvals light	Germany (StVZO)
Approvals reflector	EIA, K
Light output	200/230 lumen
Features	available as dynamo or e-bike version, click-in reflector, projector technology, dazzle free with sharp cut off line

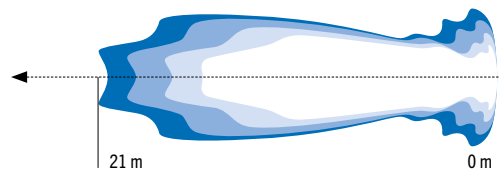
Light pattern



H-BLACK MR8

Versions	H-Black MR8 dynamo: on/off standlight H-Black MR8 e-bike: on, 6–12 V DC
Approvals light	Germany (StVZO), France, TP LBi
Approvals reflector	EIA, K
Light output	180/200 lumen
Features	available as dynamo or e-bike version, click-in-reflector, mirror reflector, wide homogenous near field illumination, also available as top mounted

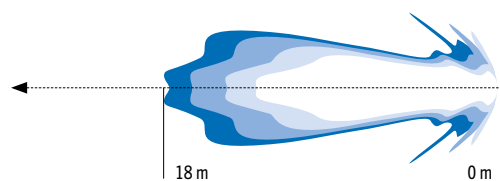
Light pattern



H-BLACK MR4

Versions	H-Black MR4 dynamo: on/off standlight H-Black MR4 e-bike: on, 6–12 V DC
Approvals light	Germany (StVZO), France, TP LBi
Approvals reflector	EIA, K
Light output	100/120 lumen
Features	available as dynamo or e-bike version, click-in-reflector, mirror reflector

Light pattern



ASSEMBLY OPTIONS

standard bracket*	
stem bracket, Ergotech, Promax, Shultz	
multi-joint bracket	
dual handlebar bracket	
Rock Shox Paragon	
SR Suntour Ver1, fork bridge: CR8, NEX, NCX-E	
SR Suntour Ver2, fork bridge: CR-9, NCX-D	
SR Suntour Ver3, fork crown: NCX Mobie-E25, E45	
stainless steel for rigid fork short steel or black*	
stainless steel for rigid fork long* steel or black*	
stainless steel for suspension fork steel or black	
front carrier bracket	
*Standard bracket and stainless steel for rigid fork, short (also black) are not compatible with H-Black Pro.	



Herrmans MR GO is our entry level frontlight that uses similar optics and electronics as our H-Black MR4 frontlight.

MR GO

Versions	MR GO dynamo: on/off MR GO e-bike: on, 6–12 V DC
Approvals light	Germany (StVZO), France, TP LBi
Approvals reflector	EIA, K
Light output	80/100 lumen
Features	available as dynamo or e-bike version, click-in reflector (sold separately)
Assembly options	Standard long bracket, SR Suntour Ver1, fork bridge CR8, NEX, NCX-E

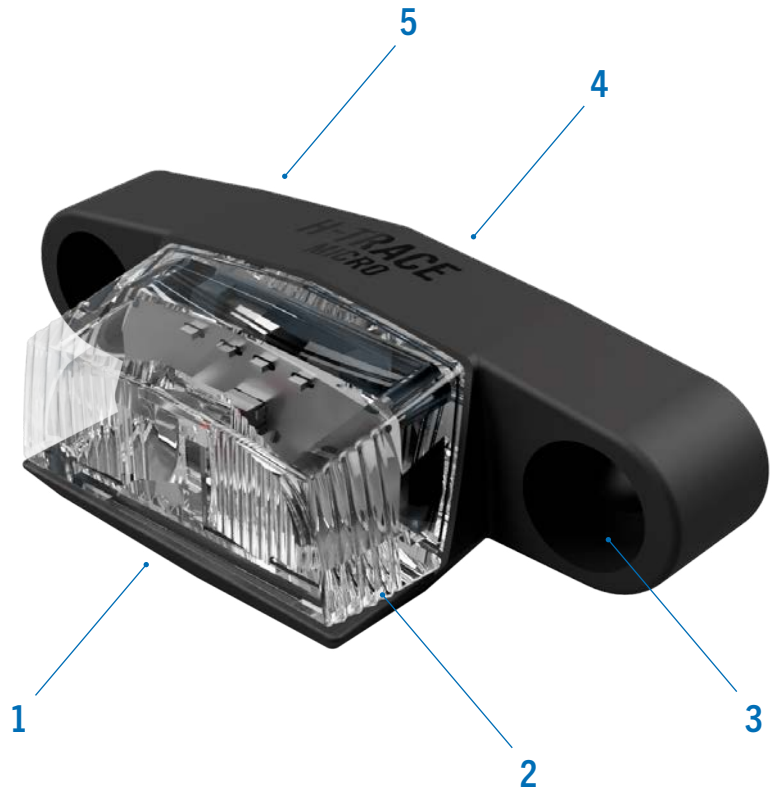


REAR LIGHTS

We believe in creating rear lights that are compatible with different kinds of bikes, whether battery, dynamo or e-bike. Fulfilling a number of European road traffic regulations, our rear lights are durable and modern with fantastic light output thanks to our exclusive light guide technology. When you need a custom-made solution for your next bike model, our in-house high-tech lighting expertise gives us the expertise to offer you the innovation you need.

A COMPACT, CLEVER BICYCLE REAR LIGHT SOLUTION *H-TRACE MICRO FOR CARRIER*

Herrmans H-Trace Micro Rear Light for carrier is a development from its twin, the mudguard-mounted H-Trace Micro. This modern, high-quality rear light has many great features: a durable alloy housing with 50 mm mounting distance for screws, a spectacular angle visibility of 220° for increased safety, a high level of versatility that allows it to be mounted on many kinds of bikes with a carrier, also available with railsbracket for mounting under the saddle. The H-Trace Micro e-bike for carrier fulfils German StVZO and French TP RBi regulations and is suitable for e-bikes 6–12 V.



- 1

Compact and modern e-bike rear light.
- 2

220° visibility for increased safety.
- 3

A durable alloy housing with 50 mm mounting distance for screws.
- 4

Versatile mounting options.
- 5

Suitable for e-bikes 6–12 V.

H-TRACE MICRO FOR CARRIER

Versions	H-Trace Micro for carrier E-bike: 6–12 V
Homologation light	Germany (StVZO), France (TP RBi), Denmark
Features	Compact design, alloy housing with 50 mm screw distance, 220° angle visibility, available as e-bike version

REAR LIGHTS



H-TRACE MICRO E-BIKE

Versions	H-Trace Micro E: 6–12 V DC
Homologation light	Germany (StVZO), France (TP RBi), Denmark
Features	for e-bike, 220° visibility, for mudguards, size 34 x 25 x 27 mm



H-TRACE MINI E-BIKE / DYNAMO

Versions	H-Trace Mini Dynamo: on, standlight H-Trace Mini E-bike: on, 6–12 V
Homologation light	Germany (StVZO), France (TP RBi), Denmark
Homologation reflector	E I A, K
Features	available as dynamo or e-bike version, for mudguard, 220° visibility, size 24 x 34 mm



H-TRACE E-BIKE / DYNAMO / BATTERY

Versions	H-Trace Dynamo: on, standlight, integr. screws 50 mm H-Trace E-bike: on 6–1 V DC, integr. screws 50 mm H-Trace Battery: integrated screws 50 mm
Homologation light	Germany (StVZO), France (TP RBi/TP RPBi), Denmark
Homologation reflector	E I A, Z
Features	E-bike/Dynamo: light guide technology, 220° visibility, size 91 x 45 mm Battery version: on/off switch, low-battery indicator, battery run-time: 140 h, 220° visibility

H-CARGO E-BIKE / DYNAMO

Versions	H-Cargo Dynamo wide: on, standlight, size 120 x 14 mm H-Cargo Dynamo narrow: on, standlight, size 95 x 14 mm H-Cargo E-Bike wide: on, 6–12 V DC, size 120 x 14 mm H-Cargo E-Bike narrow: on, 6–12 V DC, size 95 x 14 mm
Approvals	Germany (StVZO), France (TP RBi), Denmark
Approvals reflector	EIA, Z
Features	Light guide technology, 220° visibility (e-Bike and Dynamo)



ASSEMBLY OPTIONS



H-Trace Mini and Micro available for mudguard



H-Trace Mini and Micro available with seatstay bracket



integrated screws 50 mm for H-Trace



snap in railsbracket 50 mm for H-Trace



GRIPS

When we design our grips, we take such factors into account as ergonomics, comfort, safety, design and environmentally friendly materials. All our grips are produced in Europe, tested in rigorous hot water and freeze tests and fulfil all European regulations. The Herrmans Bike Components TPE grips are made of European non-toxic material and are PAH, latex, natural rubber and phthalate free.



Discover the full range on our website!

HERRMANS GRIP CATEGORIES



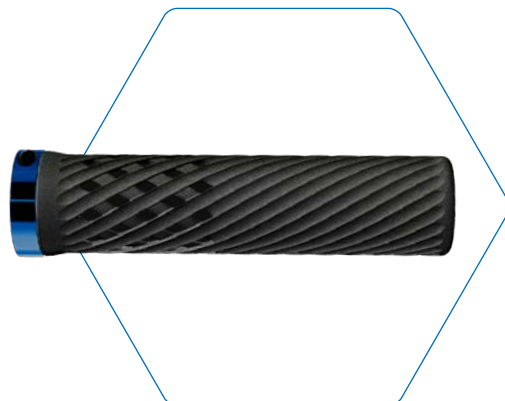
ACTIVE GRIPS

give you total control during your bike ride thanks to the special patterns and structure that ensure the best shock absorption and handle. They are not only aesthetically pleasing, but also provide the rider with, increased comfort and reduction of fingertip pressure. Active grips give the rider maximum comfort and support and are perfect for off-road riding.



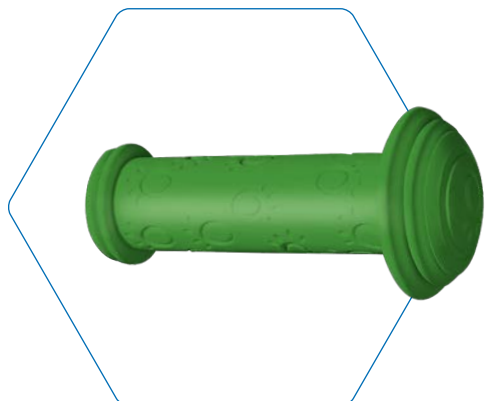
COMFORT GRIPS

produced in single or dual layer in soft material to make the grip as comfortable as possible with an optimized fit for the palm to reduce shock absorption. The angle of the grip is also optimized to prevent Carpal Tunnel Syndrome and reduce the pressure on the ulnar nerve.



LOCKABLE GRIPS

offer you choices while ensuring the most important thing, your safety. We have created lockable grips with secure mounting through safety lock rings that come in several colors and will keep your grips in place whether you are riding on extreme trails or adventuring in other demanding environments.

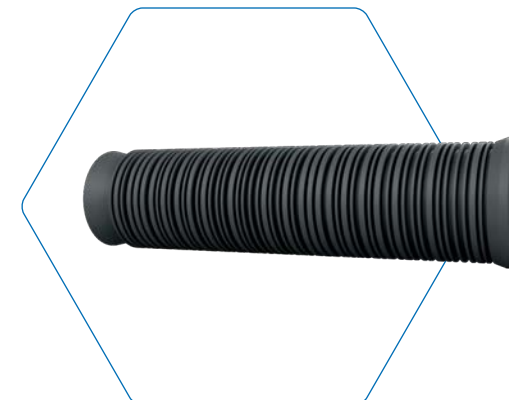


KIDS GRIPS

are where safety is our number one core value. Categories as toys, our grips will cause no allergic reactions, even if your child decides to chew on them. Our bike grips for kids are also equipped with a secure outer flange to prevent the hand from slipping and to take the hit in case of a tumble to the side.

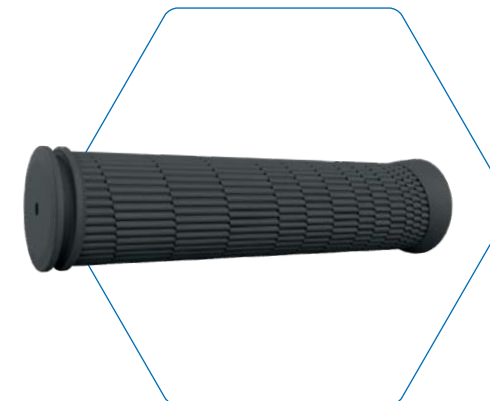
ADDED COMFORT AND SAFETY WITH UPDATED BICYCLE GRIPS!

Let us introduce three new family members in our versatile grip range. Grip Morse is a completely new grip designed for all kind of bikes, Fibonacci is now also available in a long version, and our popular Double Rib lock grip has a little sister in the Single Rib lock grip.



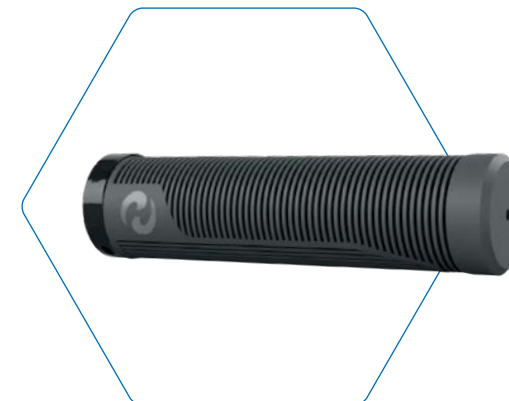
GRIP MORSE

Herrmans Morse single density grip is a modern and sporty grip. Due to its dampening lamellas it ensures premium comfort for the cyclist. With its durable material and symmetric design it is suitable for all kinds of bikes, off-track or in the city. Available in a long version (125 mm).



GRIP FIBONACCI

Herrmans Fibonacci single density grip is sporty and comfortable. With its trendy design and structured pattern, this grip is adaptable and can be mounted on any kind of bike. The structured pattern ensures a safe grip both in the city and off-track. It is available in both short (90 mm) and long (120 mm) versions.



GRIP RIB SINGLE LOCK

Herrmans Rib single lock dual density grip ensures great comfort with its cooling lamellas. The excellent shock absorption will make your off-track ride all the smoother. The harder inner core is securely fastened to the handlebar with a lock system, ensuring a safe ride. Available in a long version (130 mm).

The grips are phthalate free, PAH free, latex free as well as natural rubber free.

A ROYAL COLLABORATION
PRIMO

The Grip Primo Series is the successful result of the collaboration between Selle Royal and Herrmans starting in 2018. The option we give the customers with this collaboration is to match the saddle with the grip, the first parts a rider touches on the bike.

The strength of Grip Primo is the 4 layer production with cover matching technology CMT, available in seven different fabrics. We have chosen the most popular covers such as “Kennebeck Brown 8129”, followed by “Renna Black 8067”, “Renna Brown 8073”, “Kennebeck Cream 8138”, “Act.tex Black 8096”, “Act.tex Brown Antique 8056” and “Act.tex Honey Brown 8051”. The grips are easy to mount and fasten securely with our practical lock system.

Grip Primo has a great dampening ability thanks to its ergonomic shape and triple density. It has high comfort and control levels and fast angle adjustment. It is made out of European-made nontoxic materials; Phthalate, PAH, latex and natural rubber free, and is ISO/EN standard 4210-5 compliant.



ERGONOMIC AND VERSATILE GRIP
Suitable for 22 mm handlebar

SECURE ALLOY LOCK SYSTEM
The lock rings keep the grips in place and the rider safe.

CUSTOM-MADE END PLUG
Feel free to ask us to manufacture a branded end plug for you



DISCOVER
PRIMO FAMILY

ACT.TEX black, ACT.TEX brown, Renna black, Renna brown, Honey brown, Kennebeck brown, Kennebeck cream

Discover the full range
on our website!



CHAIN GUARDS

Chain guards have been in the Herrmans product portfolio for almost 30 years and we have been working with injection moulding for even longer, giving us extensive experience in material features, quality, production techniques and design. Bike chain guards not only fulfil a practical function, they are also a key design element on the bicycle. Lightweight, sporty, adjustable, modern or classic, the Herrmans bicycle chain guard range fits various bikes and crank sets, available both for standard bikes and e-bikes.

THE MINIMALISTIC AND VERSATILE ONE

HALO 38

Halo 38 is the hero of all our chainguard heroes. It is minimalistic, sporty and versatile, available in either glossy or matte. It can also be color matched with several popular Selle Royal saddle covers. It is adjustable between 325–440 mm, UV-resistant, has tool-free snap-on assembly/disassembly and easy fitting for standard bikes and the most common ebikes engines.

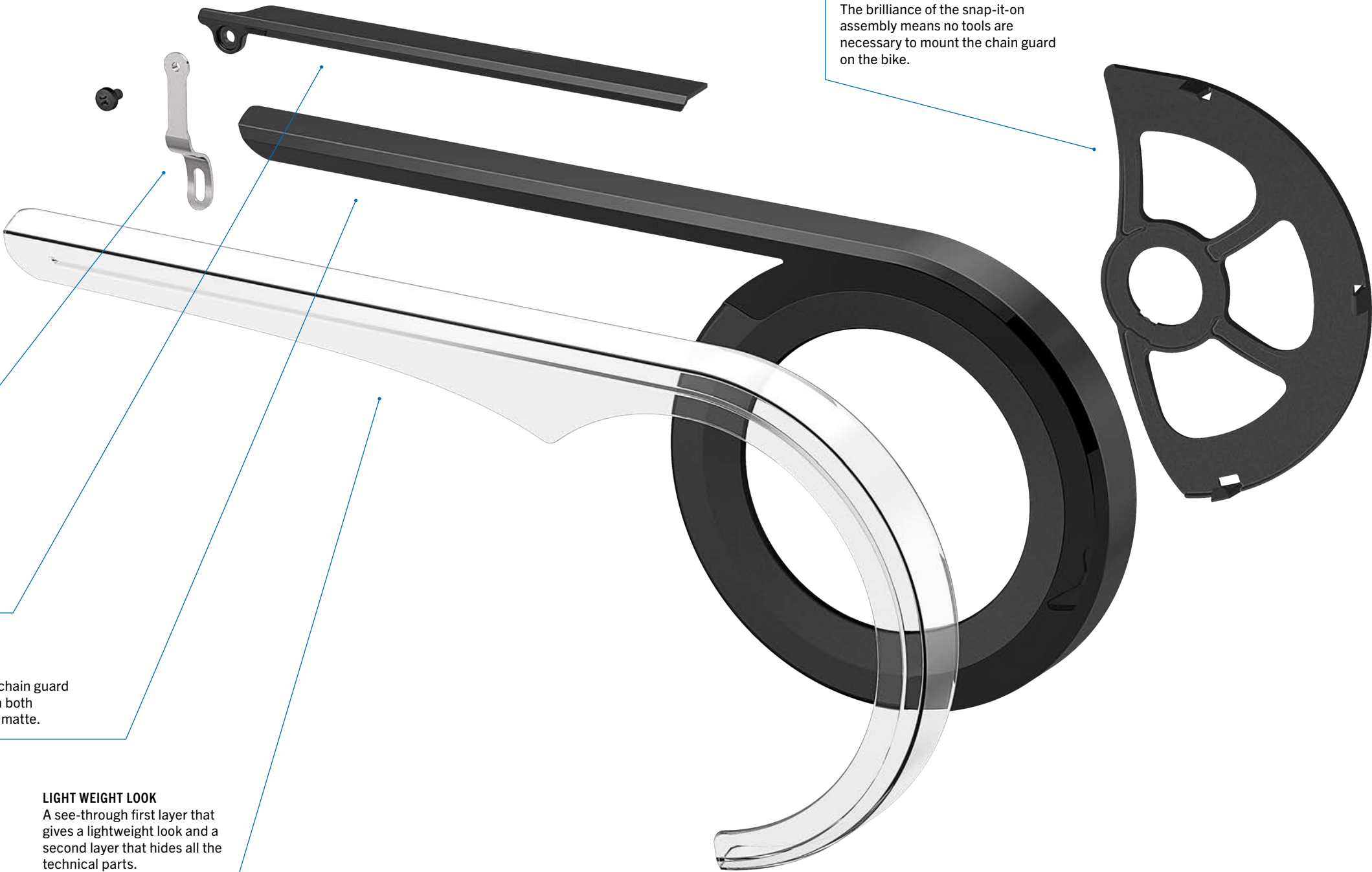
SEVERAL BRACKETS
With several front and rear-fitting options suited for both standard and e-bikes, this is one very versatile chain guard.

TAILPIECE
For length adjustment between 325–440 mm.


TRENDS
Dual layer chain guard available in both glossy and matte.

LIGHT WEIGHT LOOK
A see-through first layer that gives a lightweight look and a second layer that hides all the technical parts.

SNAP ON FEATURES
The brilliance of the snap-it-on assembly means no tools are necessary to mount the chain guard on the bike.




SLYDE TECH




HALO

Versions	Halo 38: adjustable, matte, Ø 125, 325–440 mm Halo 38: adjustable, glossy, Ø 125, 325–440 mm
Front Fitting	38 plastic single snap-in open, 38 plastic single snap-in semi closed, 38 Bosch Gen 3 snap-in, 38 STePS 8000/ Bafang MAX snap-in, 38 Yamaha snap-in, 38 StePS 6000 snap-in, CNG-FF 38T E5000 snap-in, CNG-FF 38T E6100 snap-in, CNG-FF 38T Bafang Modest&MaxDrive2 snap-in
Rear Fitting	long steel 87 mm, short steel 76 mm, steel 66 mm, seat stay 57 mm, plastic cable tie 2, flat 57 mm
Features	chainring, dual layer, durable, UV-resistant
Colours	transparent/black transparent/silver transparent/white transparent/Kennebeck brown transparent/Renna brown transparent/Act.Text brown



SLIM

Versions	Slim 38, adjustable, Ø 163, 325–440 mm Slim 48, adjustable, Ø 215 , 325–440 mm
Front Fitting	for 38T: 38 plastic single snap-in open, 38 plastic single snap-in semi closed, 38 Bosch Gen 3 snap-in, 38 STePS 8000/Bafang MAX snap-in, 38 Yamaha snap-in, 38 StePS 6000 snap-in for 48T: 48 triple steel Ø 35 mm, 48T Bosch Gen4
Rear Fitting	for 38T: long steel 87 mm, short steel 76 mm, steel 66 mm, seat post stay 57 mm, plastic cable tie 2; for 48T: long steel 87 mm, short steel 76 mm, steel 66 mm, seat post stay 57 mm, plastic cable tie 2
Features	for 38T: chainring, dual layer, durable, UV-resistant; for 48T: chainring, dual layer, durable, UV-resistant
Colours	transparent/black transparent/silver transparent/white



SLYDE

Versions	Slyde 38: Ø 102 and Ø 108, 325–440 mm Slyde 42–44: Ø 140, 325–440 mm Slyde 48: Ø 170, 325–440 mm
Front Fitting	CNG-FF 38T E5000, CNG-FF 38T E6100, CNG-FF 38T Bafang Modest&MaxDrive2, CNG-FF 42-44 E5000, CNG-FF 42-44 E6100, CNG-FF 42-44 Bafang Modest&MaxDrive2, CNG-FF 38T Bosch Gen4
Rear Fitting	long steel 87 mm, short steel 76 mm, steel 66 mm, seat post stay 57 mm, plastic cable tie 2
Features	for E-bike, durable, UV-resistant
Colours	matte black

FOR MORE CHAINGUARD OPTIONS PLEASE VISIT OUR WEBSITE WWW.HERRMANS.EU

CHAIN GUARD BRACKETS FOR E-BIKES

PART NO.	FRONT FITTING	SCREW	TYPE	AMOUNT
5104-0162	CNG-FF 38T E5000 snap-in	5101-0063	M4x6	2 pcs
5104-0162	CNG-FF 38T E6100 snap-in	5101-0039.1	M4x8	2 pcs
5104-0162	CNG-FF 38T Bafang Modest&MaxDrive2 snap-in	5101-0039.1	M4x8	3 pcs
5104-0167	CNG-FF 38T E5000	5101-0063	M4x6	2 pcs
		5101-0025.1	BZ 4.2x9	2 pcs
5104-0167	CNG-FF 38T E6100	5101-0039.1	M4x8	2 pcs
		5101-0025.1	BZ 4.2x9	2 pcs
5104-0167	CNG-FF 38T Bafang Modest&MaxDrive2	5101-0039.1	M4x8	3 pcs
		5101-0025.1	BZ 4.2x9	2 pcs
5104-0168	CNG-FF 42-44T E5000	5101-0063	M4x6	2 pcs
		5101-0025.1	BZ 4.2x9	2 pcs
5104-0168	CNG-FF 42-44T E6100	5101-0039.1	M x8	2 pcs
		5101-0025.1	BZ 4.2x9	2 pcs
5104-0168	CNG-FF 42-44T Bafang Modest&MaxDrive2	5101-0039.1	M4 x 8	3 pcs
		5101-0025.1	BZ 4.2x9	2 pcs
5104-0164	CNG-FF 38T Bosch Gen3	5101-0062	M4 x 8	2 pcs
		5101-0025.1	BZ 4.2x9	2 pcs
5104-0172	CNG-FF 38T Bosch Gen4 Snap-in	5101-0069	M6x10	3 pcs
5104-0173	CNG-FF 48T Bosch Gen4	5101-0069	M6x10	3 pcs
		5101-0041.1	M5x8	2 pcs
5104-0183	CNG-FF 38T Bosch Gen4	5101-0069	M6x10	3 pcs
5104-0184	CNG-FF 42-44T Bosch Gen4	5101-0069	M6x10	3 pcs
5104-0101	Frontfitting 38 Shimano STePS E6000	5101-0039.1	M4x8	3pcs
		5101-0025.1	BZ 4.2x9	2pcs
5104-0102	Frontfitting 42-44 Shimano STePS E6000	5101-0039.1	M4x8	3pcs
		5101-0025.1	BZ 4.2x9	2pcs
5104-0138	CNG-FF 38T STEPS E6000 snap-in	5101-0070	M4x12	3 pcs
5104-0139	CNG-FF 38T Bosch Gen3 snap-in	5101-0062	M4x8 Taptite	2 pcs
5104-0140	CNG-FF 38T Steps E8000 snap-in	5101-0069	M6x10	3 pcs
	CNG-FF 38T Bafang MAX snap-in	5101-0039.1	M4x8	3 pcs
5104-0141	CNG-FF 42-44T Bosch Gen3	5101-0062	M4x8 Taptite	2 pcs
		5101-0025.1	BZ 4.2x9	2 pcs
5104-0151	CNG-FF 42-44T STEPS E8000	5101-0039.1	M4x8	3 pcs
	CNG-FF 42-44T Bafang MAX	5101-0069	M6x10	3 pcs
		5101-0025.1	BZ 4.2x9	2 pcs
5104-0158	CNG-FF 38T STEPS E8000	5101-0039.1	M4x8	3 pcs
		5101-0069	M6x10	3 pcs
	CNG-FF 38T Bafang MAX	5101-0025.1	BZ 4.2x9	2 pcs
4190-0099	Pset Chainguard front bracket 38T for Yamaha system	5101-0039.1	M4x8	2pcs
		5101-0041.1	M5x8	2pcs
		5101-0025.1	BZ 4.2x9	2pcs
4190-0100	Pset Chainguard front bracket 38T for Yamaha snap-in	5101-0039.1	M4x8	2 pcs
		5101-0041.1	M5x8	2 pcs

CHAIN GUARD BRACKETS FOR STANDARD BIKES

PART NO.	FRONT FITTING	SCREW	TYPE	AMOUNT
5104-0025.1	Midnexus front fitting black 35 mm KS38 (TT543)	5101-0025.1	BZ 4.2x9	2 pcs
5104-0100	Midnexus front fitting 35 mm KS38 Economy	5101-0025.1	BZ 4.2x9	2 pcs
5104-0070	T-wave Triple 38 front fitting, black 40 mm	5101-0025.1	BZ 4.2x9	2 pcs
5051-0066	CNG-FF 38T Single snap-in open black	N/A	N/A	N/A
5051-0070	CNG-FF 38T Single snap-in closed black	N/A	N/A	N/A
5051-0057	Plastic Front fitting 15-20 Bosch 2014	5101-0059	M5x10 Taptite	3 pcs
5104-0031	Nexus front fitting TR46-48	5101-0025.1	BZ 4.2x9	2 pcs
5104-0048	Nexus front fitting black max 35 mm KS42-46 v2	5101-0025.1	BZ 4.2x9	2 pcs
5104-0087	Front fitting chainguard 42–44T black	5101-0025.1	BZ 4.2x9	2 pcs
5104-0105	T-wave front fitting 48 version 3 offset 5 mm	5101-0041.1	M5x8	2 pcs
5104-0132	Front fitting 48T Triple Ø 35 mm	5101-0041.1	M5x8	2 pcs
5104-0055	T-wave front fitting 48 version 2	5101-0041.1	M5x8	2 pcs
4301-0026	Rear Fastener KS Metal 38 & 48		not provided	

REFLECTORS

Herrmans Bike Components is the leading bike reflector manufacturer in Europe, dedicated to producing approved bike reflectors in accordance with the many different European homologations, even the demanding E IV A. We also manufacture approved bicycle reflectors for China and India. Our product range covers spoke, front and rear reflectors, and thanks to many different bracket options, they can be fitted on many types of bicycles.

HOMOLOGATIONS

	FRONT REFLECTORS	REAR REFLECTORS	SPOKE REFLECTORS
FINLAND	White E I A FR-1 FR-7 FR-8	Red E I A BR-7 BR-13 BR-8 BR-12	White E I A / Yellow E I A ER-8P Yellow ER-11P Yellow ER-11P White
FRANCE	White E I A FR-1 FR-7 FR-8	Red E I A BR-7 BR-13 BR-8 BR-12	Yellow TPL ER-11P Yellow
SWEDEN	White E IV A FR-1 FR-7 FR-8	Red E IV A BR-7 BR-8	Yellow E IV A ER-11P Yellow
UNITED KINGDOM	White BS FR-1 FR-7 FR-8	Red BS BR-7 BR-8	White BS ER-11P White
AUSTRIA GERMANY SWITZERLAND	White K FR-1 FR-7 FR-8	Red K Red Z BR-7 BR-13 BR-8 BR-12	Yellow K / 2 per wheel ER-8P Yellow
REST OF EUROPE	White FR-1 FR-7 FR-8	Red BR-7 BR-13 BR-8 BR-12	Yellow ER-8P Yellow ER-11P Yellow
CHINA INDIA	GB / ISO FR-7	GB / ISO BR-7	GB / ISO ER-11P Yellow

BRACKET OPTIONS FOR FRONT & REAR REFLECTORS

FR/BR-8 screwback 50-80 mm	FR/BR-8 integrated screws 19 mm	FR/BR-8 integrated screws 50 or 80 mm	Rear reflector BR-12 int. screws 50 mm	FR-1 integrated screw 19 mm	snap-in rails bracket 50 mm	snap-in rails bracket 50 mm	Rear reflector BR-13 for mudguard

BRACKET OPTIONS FOR FR-7 & BR-7

bracket for stem (FR-7) or seatpost (BR-7)	oversize bracket for handlebar	bracket for handlebar	snap-in plastic bracket for V-brakes above	plastic combined screw and snap-in bracket	for mudguards	rails-bracket snap-in
snap-in bracket FA	snap-in bracket FU	snap-in bracket RA	snap-in bracket RUL			

RIM TAPES

The rim tape, created to prevent spokes and sharp edges from the manufacturing process from making holes to the bikes inner tube, was the first product in the Herrmans Bike Components product range and introduced on the market as early as 1959. Today Herrmans is the leading rim tape manufacturer in the world with a collection that encompasses several levels of pressure requirements and different types of wheels. We offer blue HPA+ with Wing Technology for easy mounting and perfect positioning on rims from 25 mm and upwards. The yellow HPP with W-tech is extremely light and has a very high pressure resistance. HPM is the durable blue rim tape with improved pinch resistance. We are also well prepared for a more tubeless future.

RIM TAPES

HPM

Rim dimensions	Widths
305/16"	20 mm
355/18"	12 mm
406/20"	12, 14, 16, 18, 20 mm
451/20"	18, 20 mm
451–484/20–22"	16 mm
490/22"	16 mm
507/24"	12, 14, 16, 18, 20 mm
540/24"	14, 16, 18, 20 mm
559/26"	11, 12, 14, 16, 18, 20 mm
559–622/26–28"	12, 14, 16, 18, 20 mm
622–635/28"	11, 12, 14, 16, 18, 20 mm

Info: max. pressure 6 bar/87 ps
Features: improved pinch resistance, durable



HPA+

Rim dimensions	Widths
584/27,5"	25, 30, 35 mm
622/29"	25, 30, 35 mm

Info: max. pressure 6 bar/87 psi
Features: wing technology, improved pinch resistance, durable, easy to mount on rim



HPP

Rim dimensions	Widths
507/24"	18, 20, 22
540/24"	18, 20, 22
559/26"	16, 18, 20, 22 mm
622/28"	16, 18, 20, 22 mm
584/27.5"	16, 18, 20, 22 mm

Info: max. pressure 8 bar/116 psi
Features: wing technology, improved pinch resistance, durable, easy to mount on rim



ASK US ABOUT
AFTER-MARKET
AND PRIVATE LABEL
PRODUCTS
AS WELL AS OUR
ACCESSORIES.

**SUBSCRIBE TO
OUR NEWSLETTER**





We look forward hearing from you!

www.herrmans.eu

phone +358 20 1345 100

contact bike.info@herrmans.eu

orders herrmans.bikeorders@herrmans.eu

 facebook.com/HerrmansTM

 instagram.com/herrmans.ltd

 linkedin.com/company/Herrmans



HEAD OFFICE FINLAND

P.O. Box 36
68601 Jakobstad
Finland
Phone +358 20 1345 100

OFFICE GERMANY

Wilhelmstraße 5
59439 Holzwickede
Germany
Phone +49 2301 919 787 10

TAIWAN OFFICE

Phone +358 20 1345 100
E-mail herrmans.bikeorders@herrmans.eu